

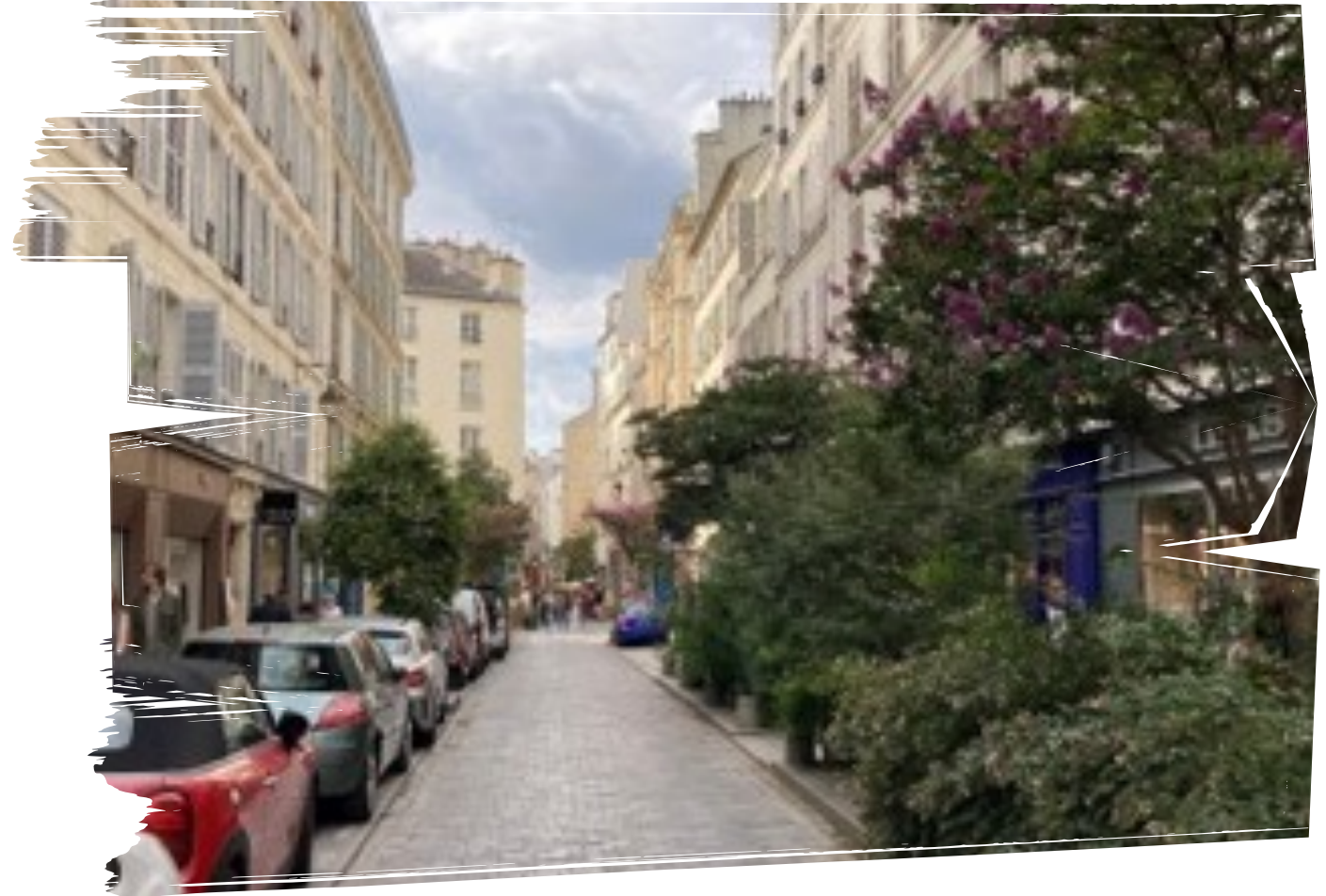


HUBS THAT CONNECT AND INTERTWINE MOBILITY, ENERGY AND SOCIAL NETWORKS

DECEMBER 7th 2023



**ENGINEERS
AUSTRALIA**



ABOUT ADVIER

Advier is a creative and innovative consultancy firm with a mission: we move people towards a more sustainable society.

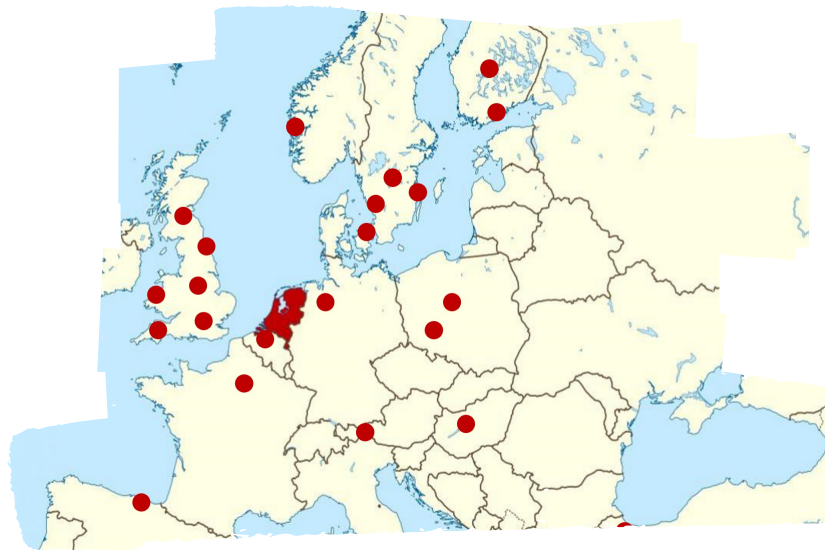
We are working on breakthroughs towards fitter societies: clear insights, tangible impact, connection and innovative initiatives

Our focus: transformation of mobility, space, organizations and governance with a holistic view in planning for the future.



ADVIER

- ... has been groundbreaking since 1998
- ... is working from historic offices in Delft and Zwolle and will open an office in Australia in January 2024
- .. with a multidisciplinary team and approach of 18 professionals
- .. working international together with public and private partners on innovations towards fitter societies



A LITTLE BIT OF BACKGROUND

"Life is like riding a bicycle. To keep your balance, you must keep moving."

— *Albert Einstein*

THE DUTCH CHALLENGE

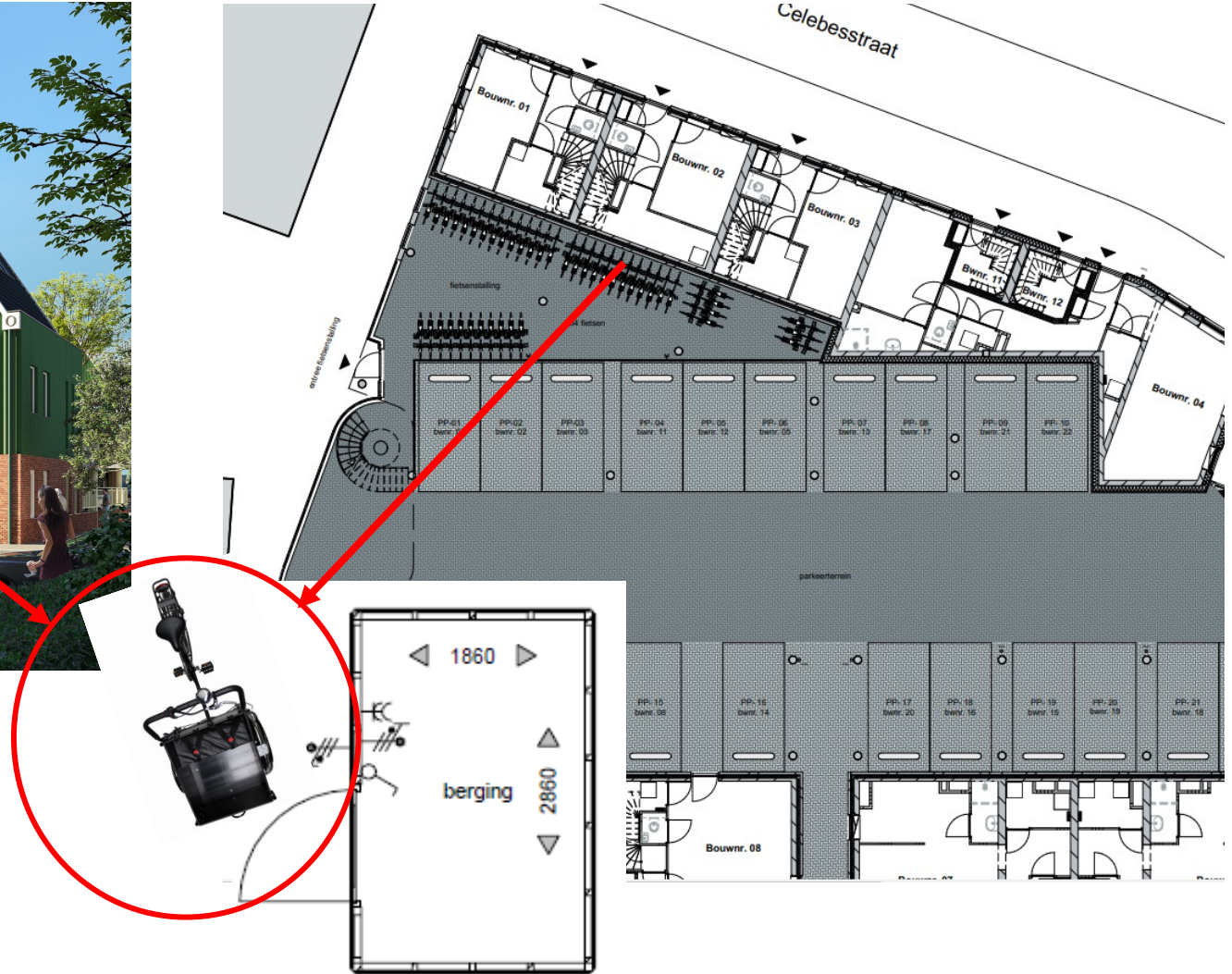
With 17,5 million people and a population density of 488 people per km², The Netherlands is the most densely populated country of the European Union and one of the mostly densely populated countries in the world.

- 2021 ca. 8 mi houses.
- In 2030 1 mi houses should be developed
=> growth of 12%

All within the boundaries of global challenges, like: *climate challenges, diversity and inclusion, health, energy, aging population, et cetera* **AND** *laws and regulation based on experiences from the past!*



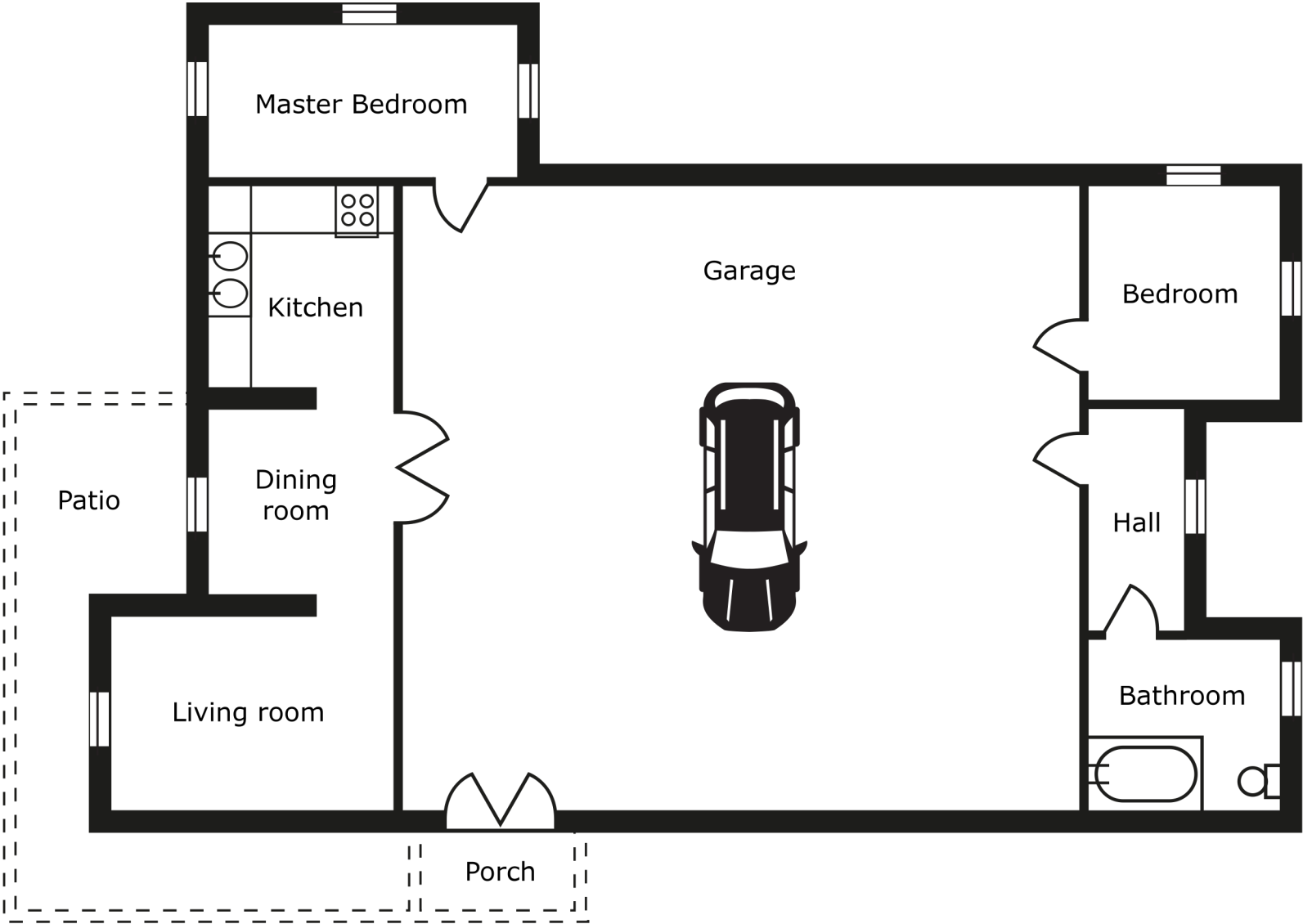
STORAGE FOR CARGOBIKE



**Results from the
past are no
guarantee for the
future**

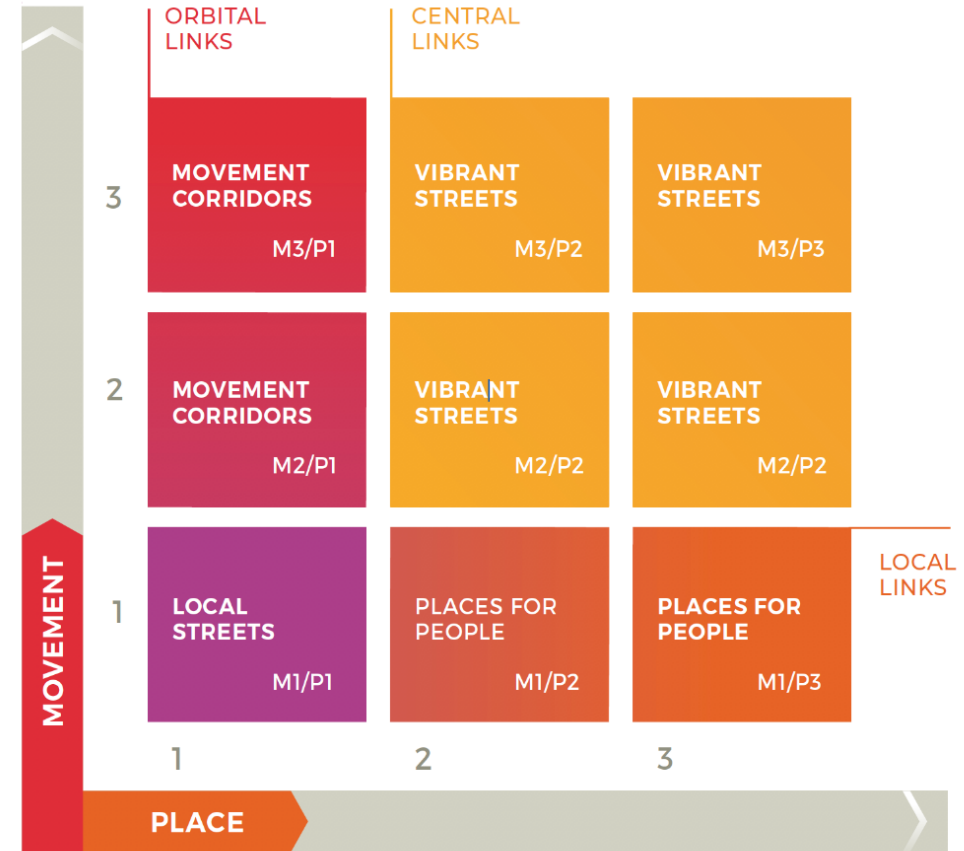


If we design houses like cities this is what we get

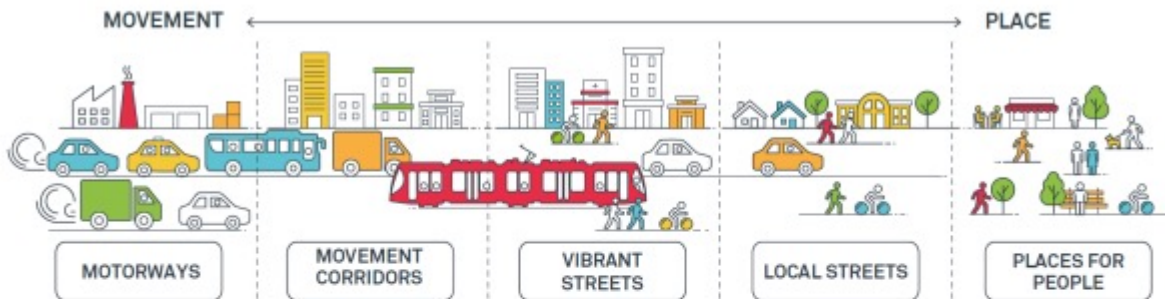


AUSTRALIAN APPROACH: MOVEMENT AND PLACE

Movement and place

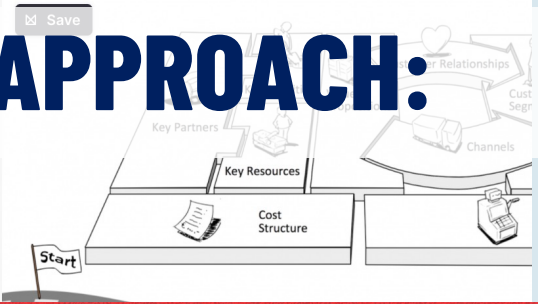


The Movement and Place Framework





A EUROPEAN APPROACH:



Meet ESMA: The European Shared Mobility Accelerator

On October 20, 2021, the SHARE-North partners Autodelen.net and Mpact launched the ESMAccelerator or the European Shared Mobility Accelerator at the CIVITAS Conference in Aachen.

[Learn more ...](#)

- December 2016
- November 2016
- October 2016
- September 2016
- July 2016
- May 2016
- April 2016
- March 2016
- February 2016

Upcoming Events

MOVE multiple pilots have been initiated, ranging from an e-go bike pilot, to an upgrade from a mobility hub.



SHARED MOBILITY ROCKS

MAY 25, 2022 | BREMEN, GERMANY

The unconventional symposium about shared mobility for planners, operators and research institutions

Integrating Shared Mobility with Inar

Shared mobility hubs has exploded in the transport planning scene and is now integrated planning and with virtually endless opportunities to create... However, the SHARE-North partners encourage cities and operators to answer one question before even getting started: what issues are you facing and what is the right tool for solving them?

Use it don't Own it.



Download: <https://share-north.eu/the-guide/>

WHAT IS A MOBILITY HUB?

- A mobilityhub is a physical place where mobility functions *AND* other shared services meet.
- It is the starting point or a interchange point where shared mobility services are combined on one location.



Antwerpen - Belgium



Bergen - Norway



The Netherlands



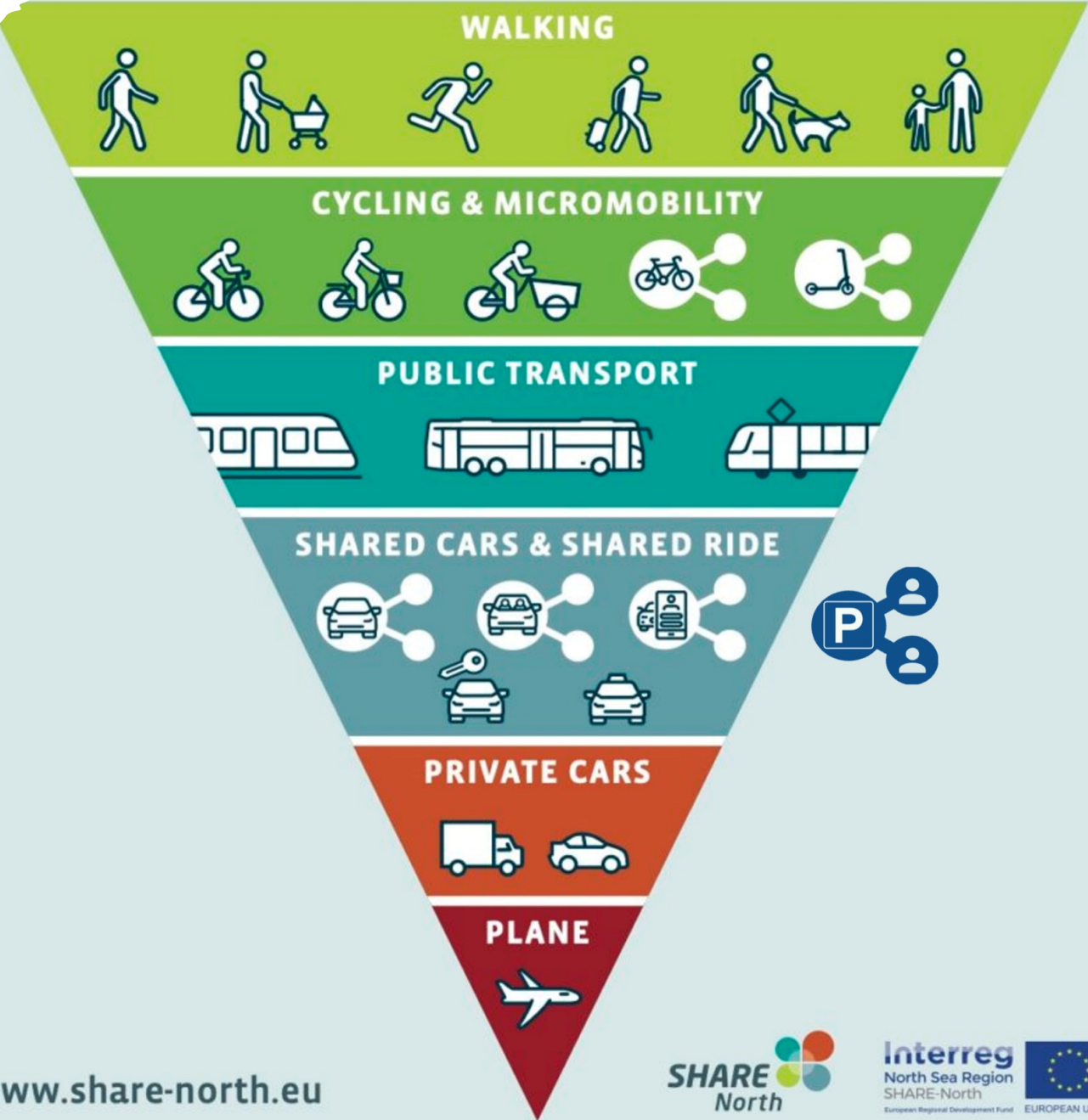
Bremen - Germany



Nurnberg Germany



MOBILITY PYRAMID



www.share-north.eu





B

A

MOBILITY HUB HIERARCHY



Inter-regional / national hub



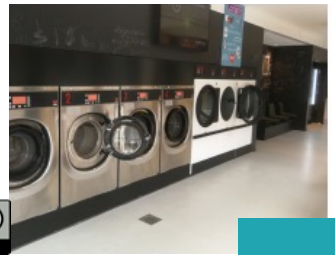
Regional hub



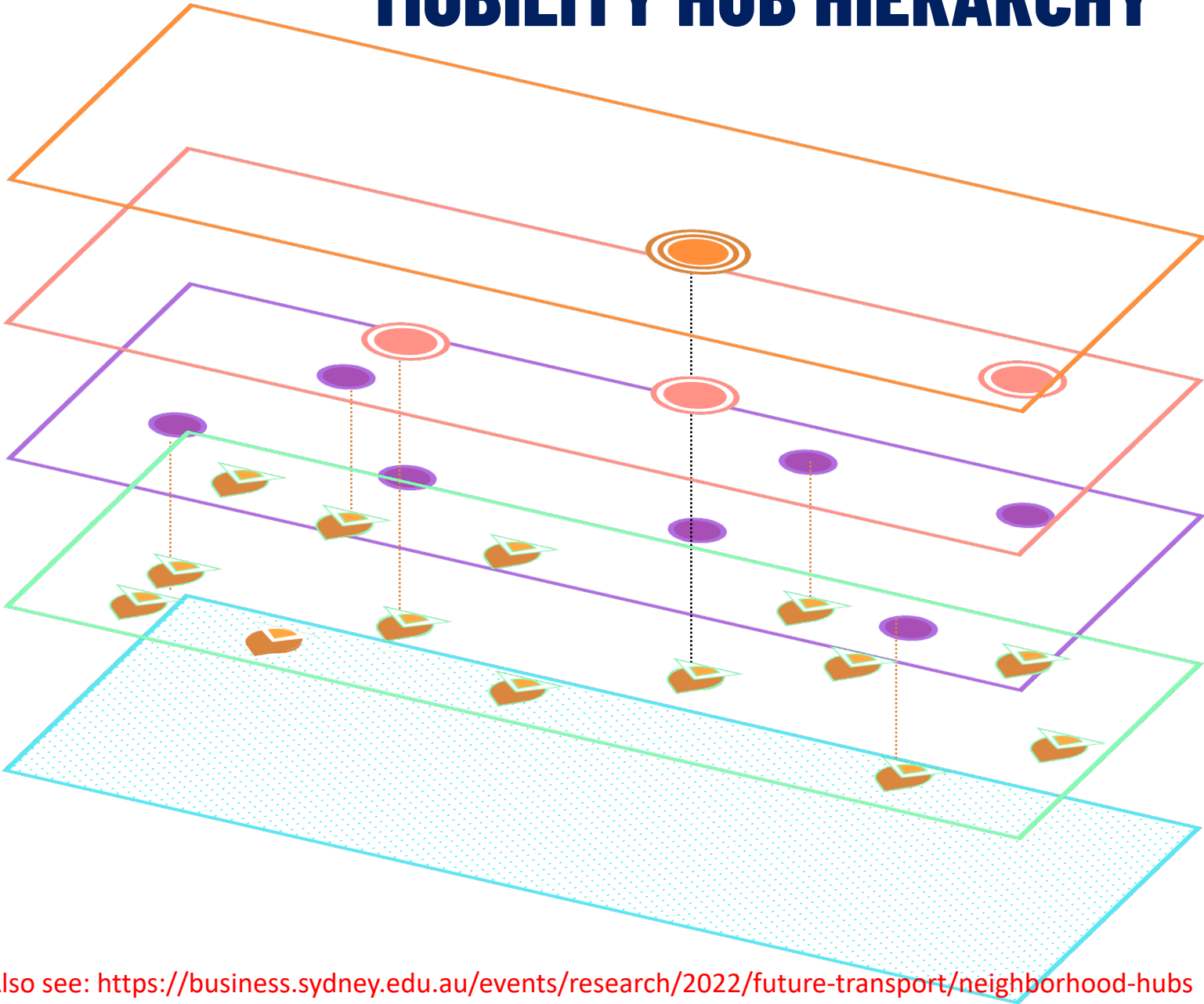
Local hub



Neighborhood hub



"in house" hub



Also see: <https://business.sydney.edu.au/events/research/2022/future-transport/neighborhood-hubs>

LESSONS LEARNED

"Smart people learn from their mistakes. But the real sharp ones learn from the mistakes of others."

--Brandon Mull

Antwerpen - Belgium



Bergen - Norway



The Netherlands



Bremen - Germany



Nurnberg Germany



WHY HUBS..

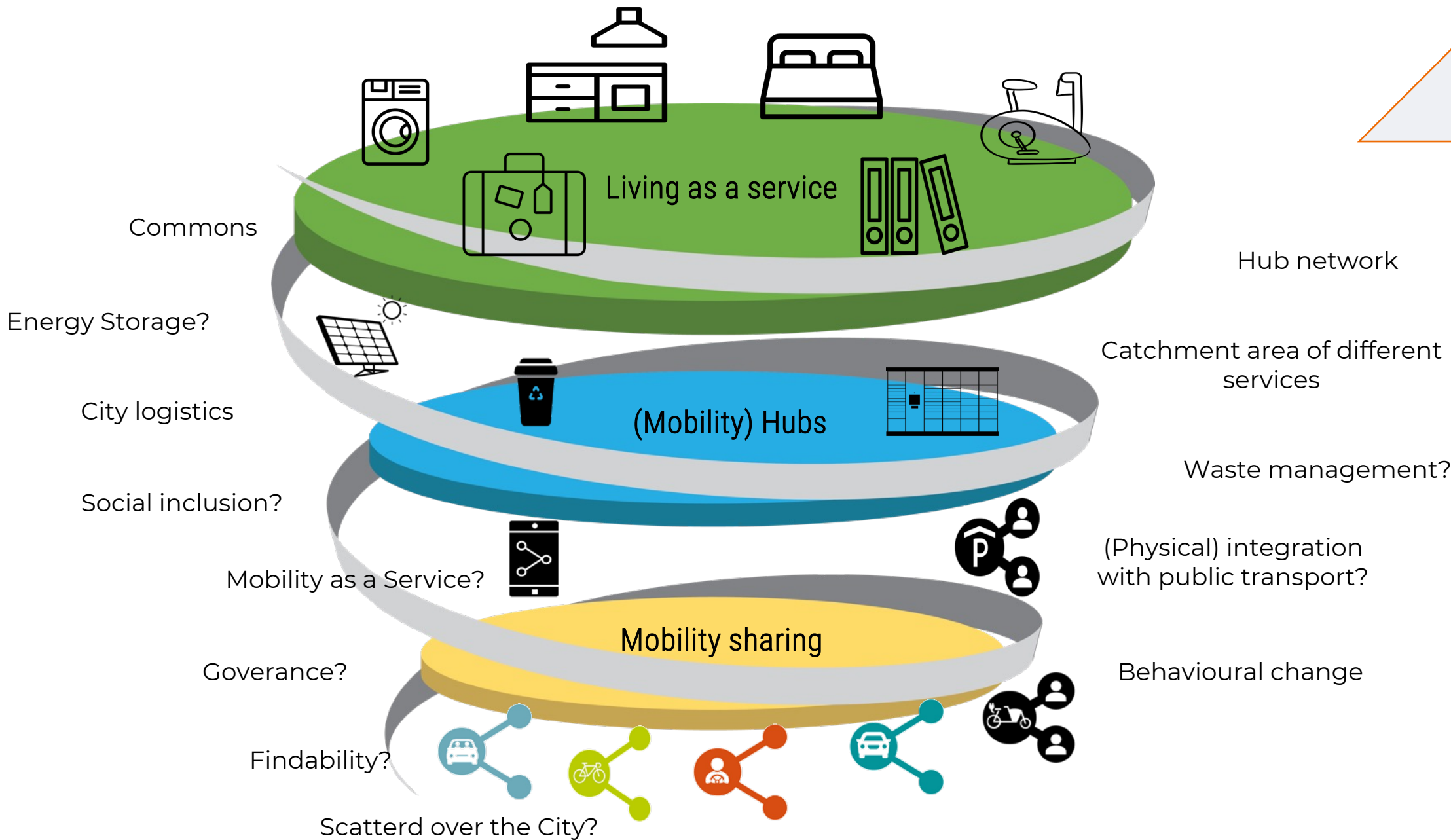


- Obtaining space
- A logical and findable place for users
- Social connector/integrator of the neighborhood

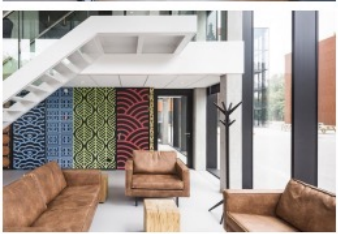
THE FUTURE HUB

A mobility hub connects a mobility, energy, and social network with space for storage and transfers, storage and transshipment (of energy, goods and waste) and (temporary) stay, meeting and gaining energy (coffee)





DEVELOPMENTS TOWARDS THE FUTURE



“Living as a Service”

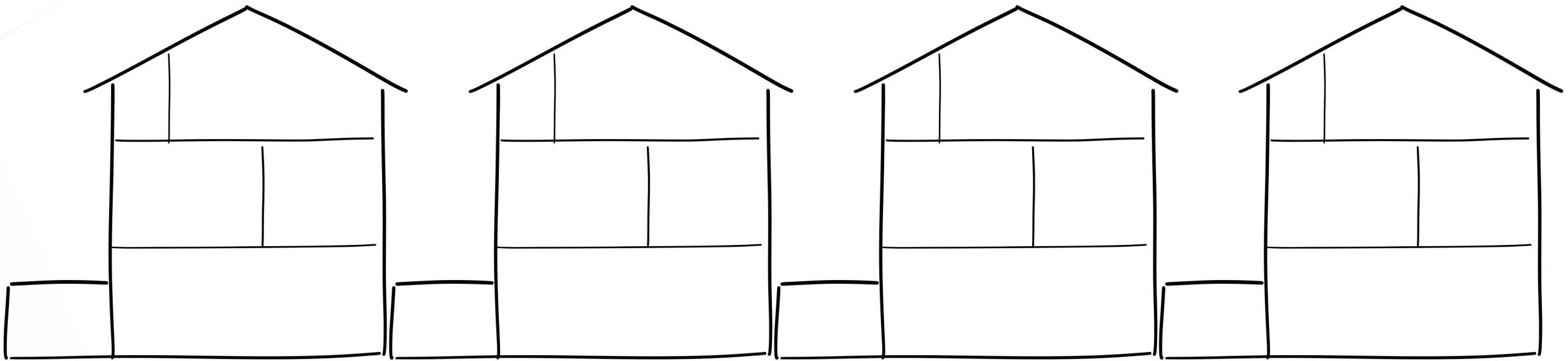


COMMUNITIES, COMMONS, SHARED SERVICES AND DATA

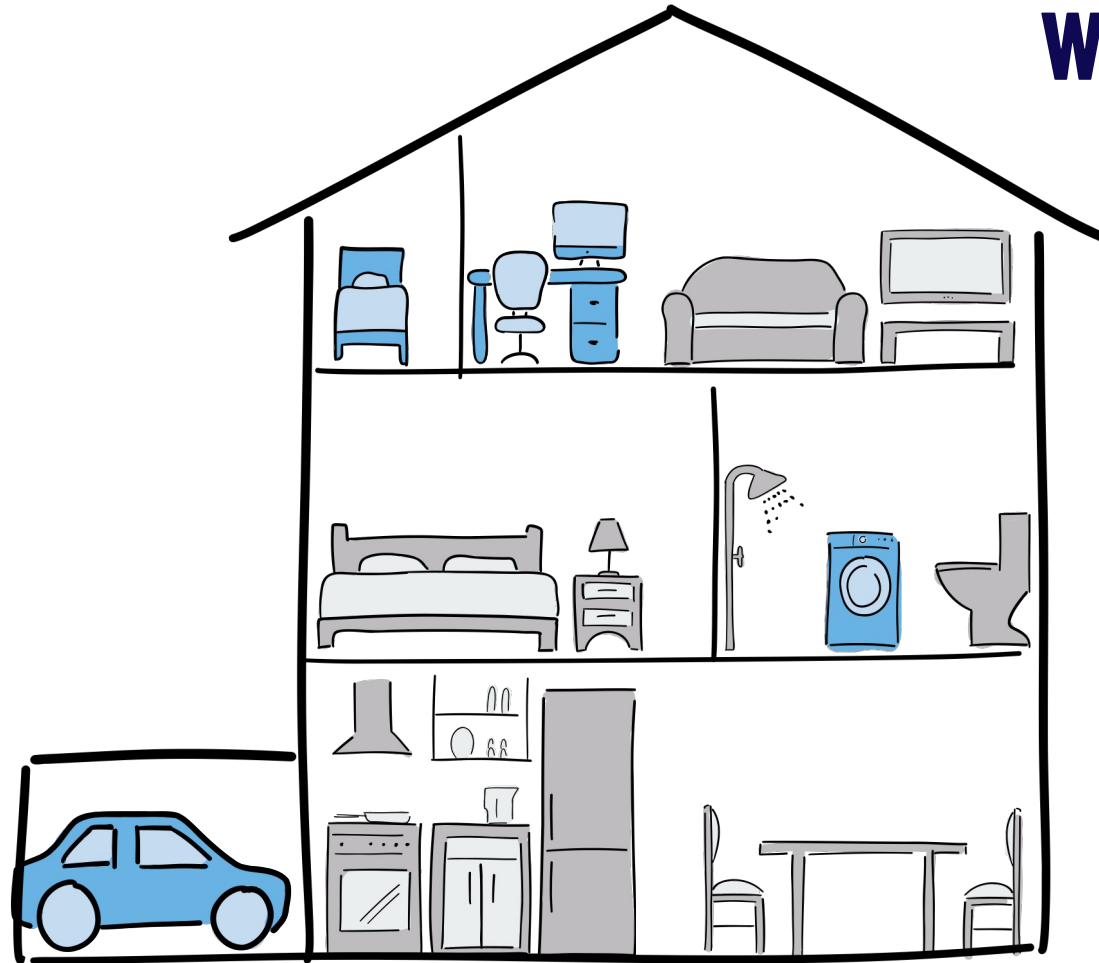
A viable neighborhood is a community: and a viable community is made up of neighbors who cherish and protect what they have in common.”

— Wendell Berry

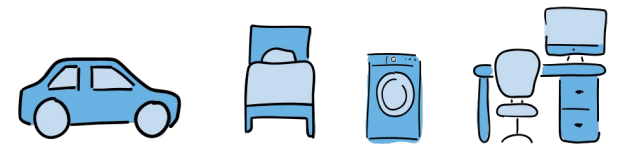
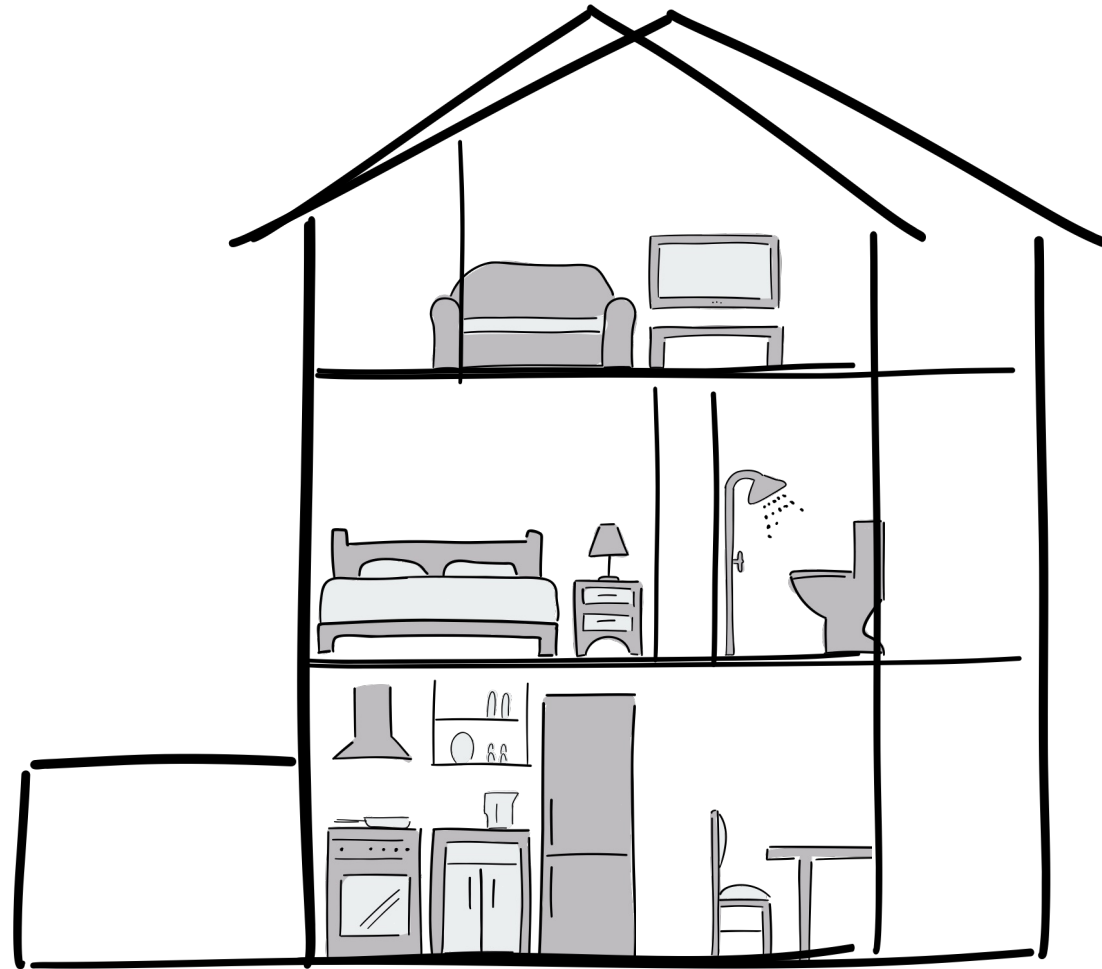
CONVENTIONAL CONSTRUCTION



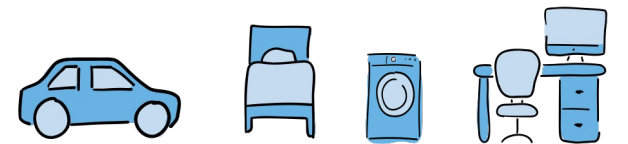
WHERE CAN WE FIND SPACE WITHOUT SACRIFICING COMFORT?



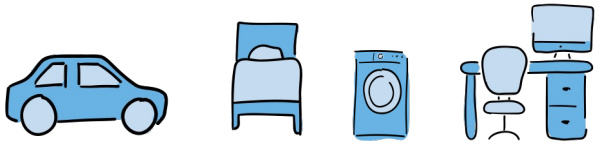
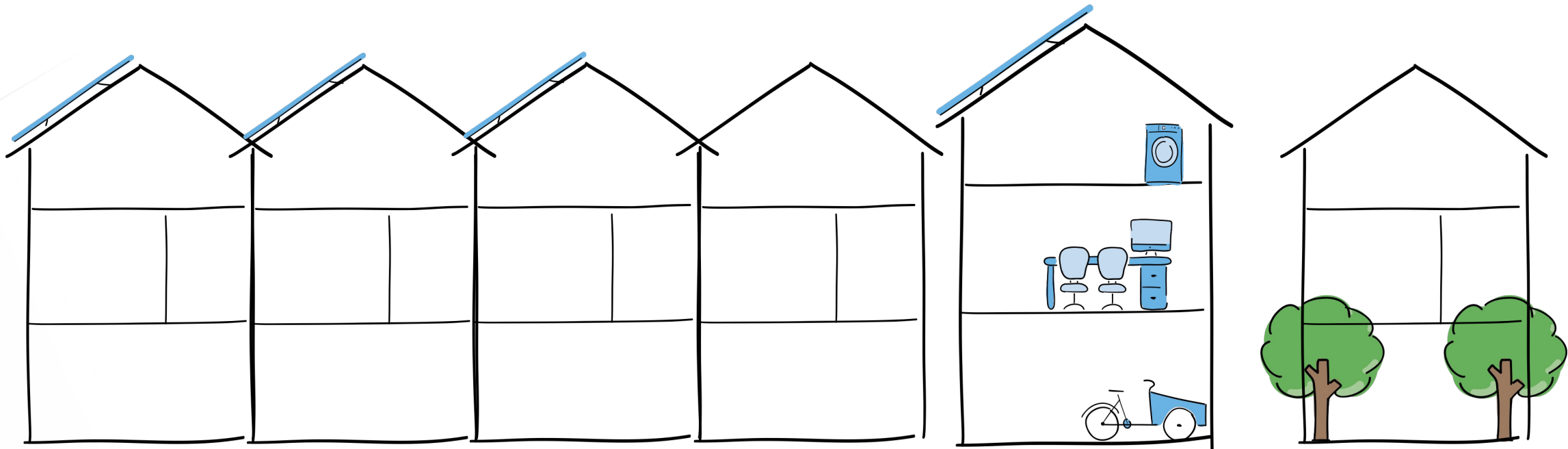
WE NEED AND WANT TO BE SMALLER



THE ADVANTAGES IN SPACE

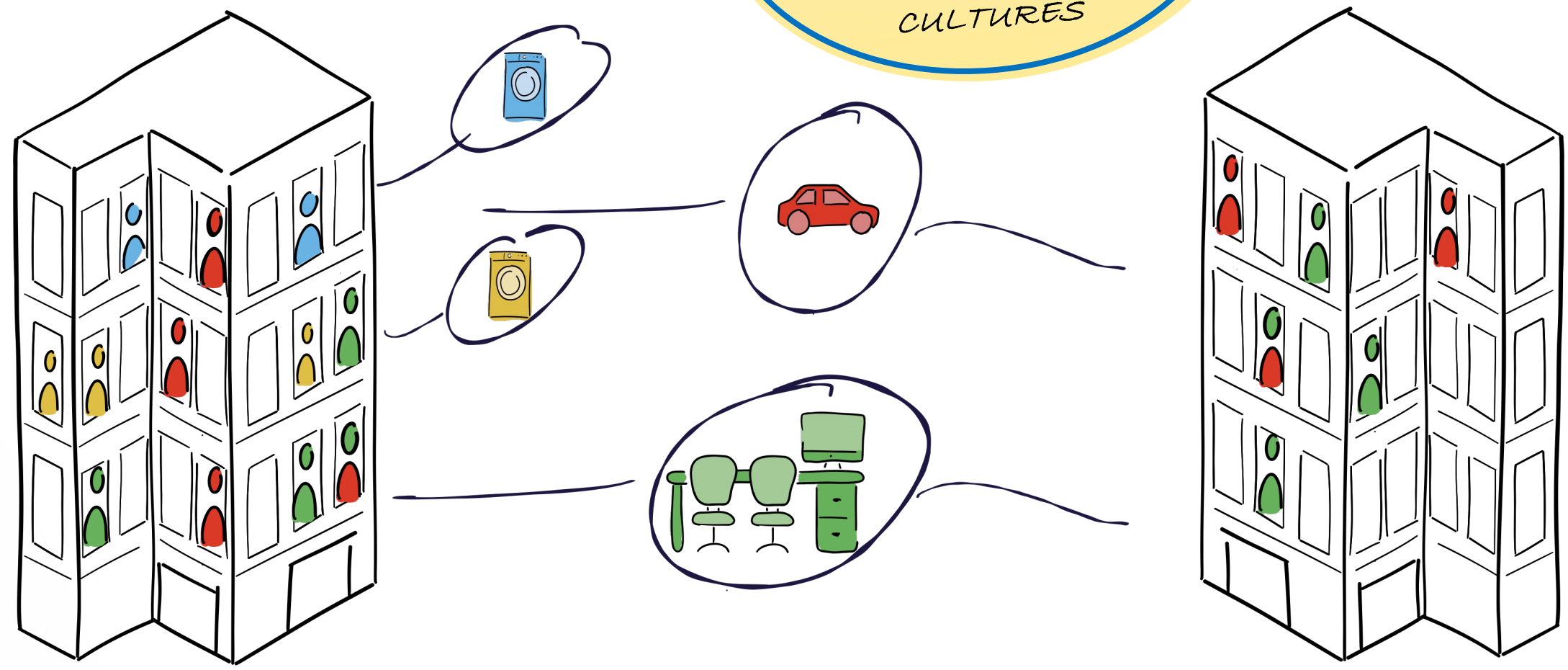


THE ADVANTAGES IN QUALITY



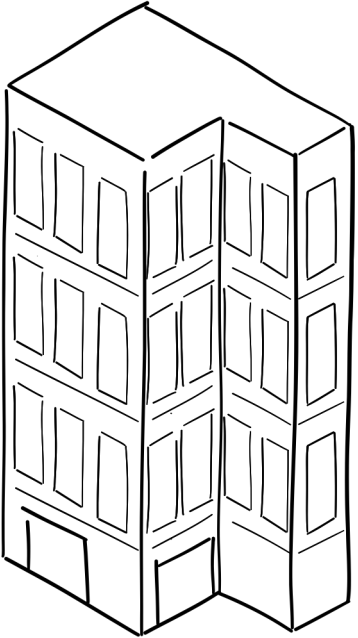
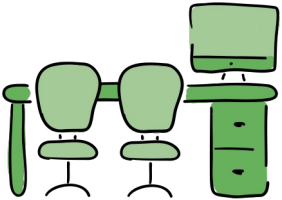
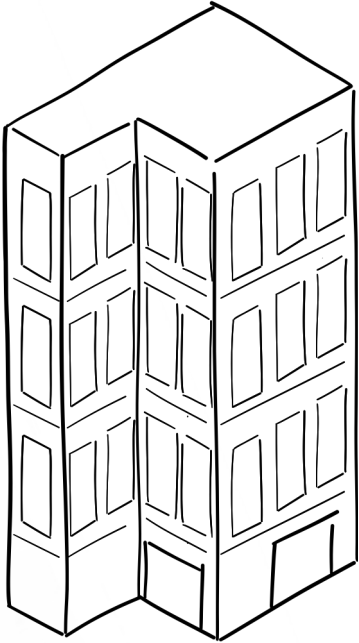
COMMUNITIES

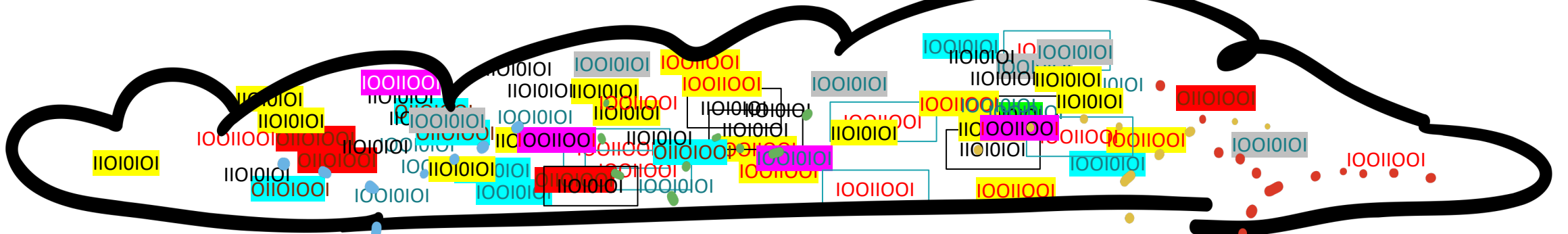
CHALLENGE: THE DIFFERENT COMMUNITIES ARE MADE UP OF DIFFERENT INCOME GROUPS AND CULTURES



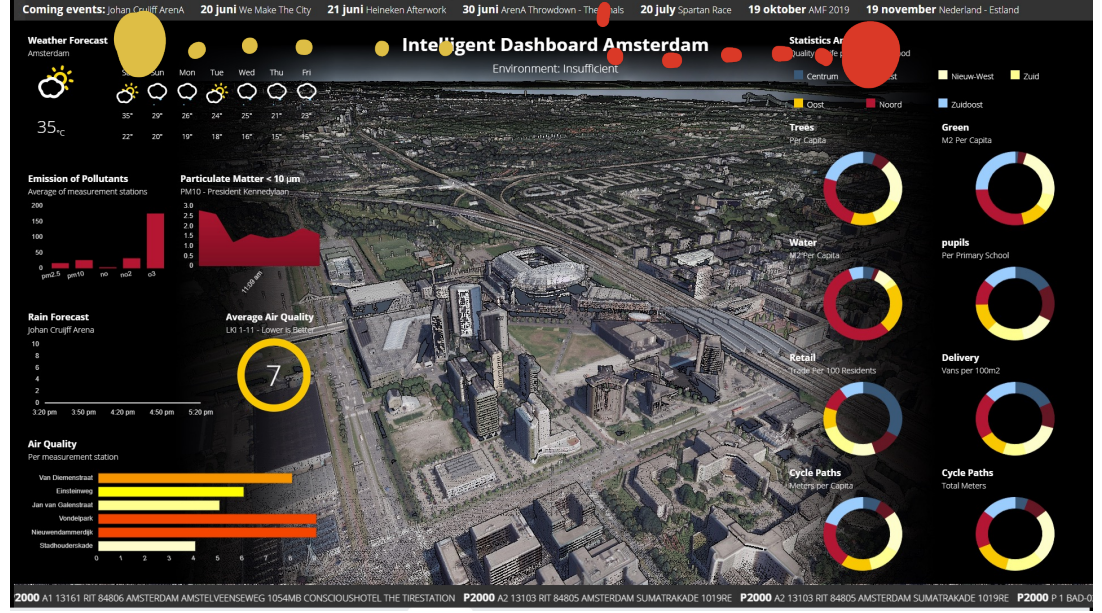
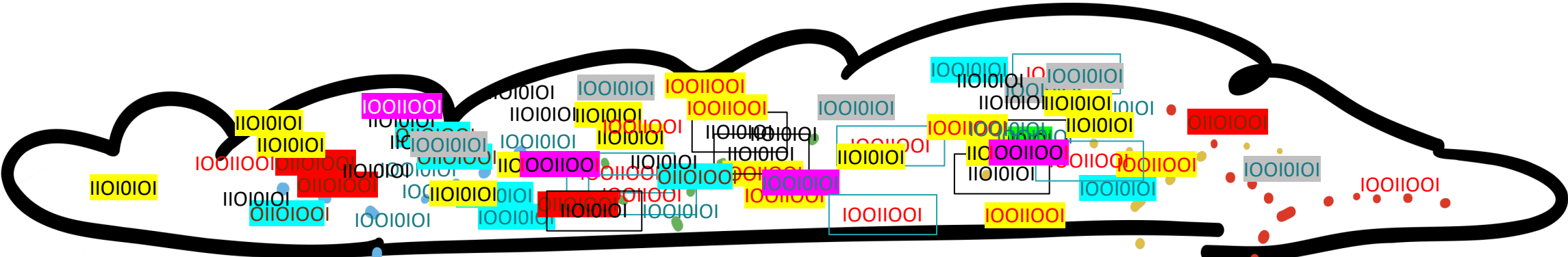
DATA

GOVERNANCE OF DATA IN THE CLOUD IS A CONSEQUENCE OF THE ORGANIZATION OF OWNERSHIP IN THE PHYSICAL WORLD





SMART CITY DASHBOARD?



THE MIX OF CHALLENGES

- Spatial assignment
- Behavioral task
- Sustainability and climate challenge
- Economic challenge
- Energy
- Social task
- Et cetera

=> an organizational challenge



THE REAL CHALLENGE....



PLANNING TOWARDS THE FUTURE

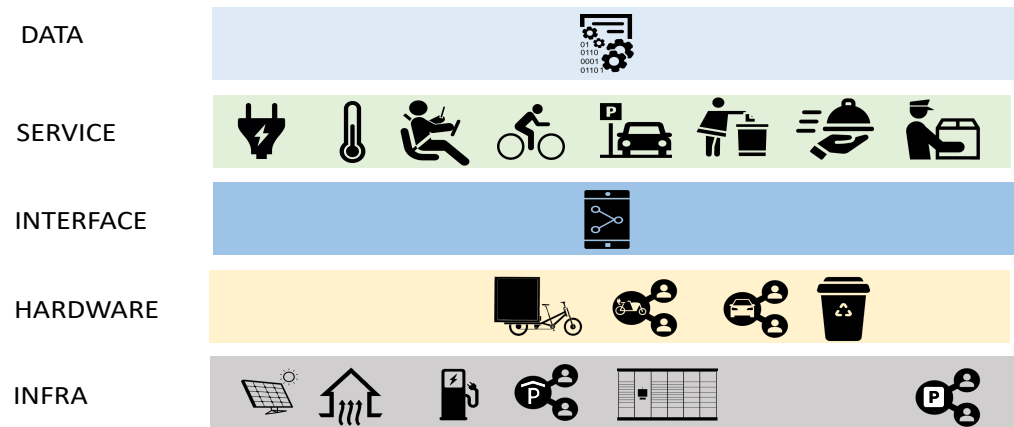


Is digging iron pipes a "no regret"?



Water as infrastructure?

Smart governance as a shared services?



Electric buses as mobile power station on hubs?





Colofon

More downloads:

www.advier.com

E-mail

Minze.Walvius@Advier.com

Operational in Australia:

Januari 2024

Contact:

Elke.Kroft@Advier.com

Feel welcome to contact us for questions, an introduction or to learn more.

We are happy to share!

